



**MHHS
PROGRAMME**
Industry-led, Elexon facilitated

Mid Sprint Review - Sprint 0

Document Classification: Public

What we'll cover today



Welcome and introductions



Planning



Sprint 0 Progress so Far

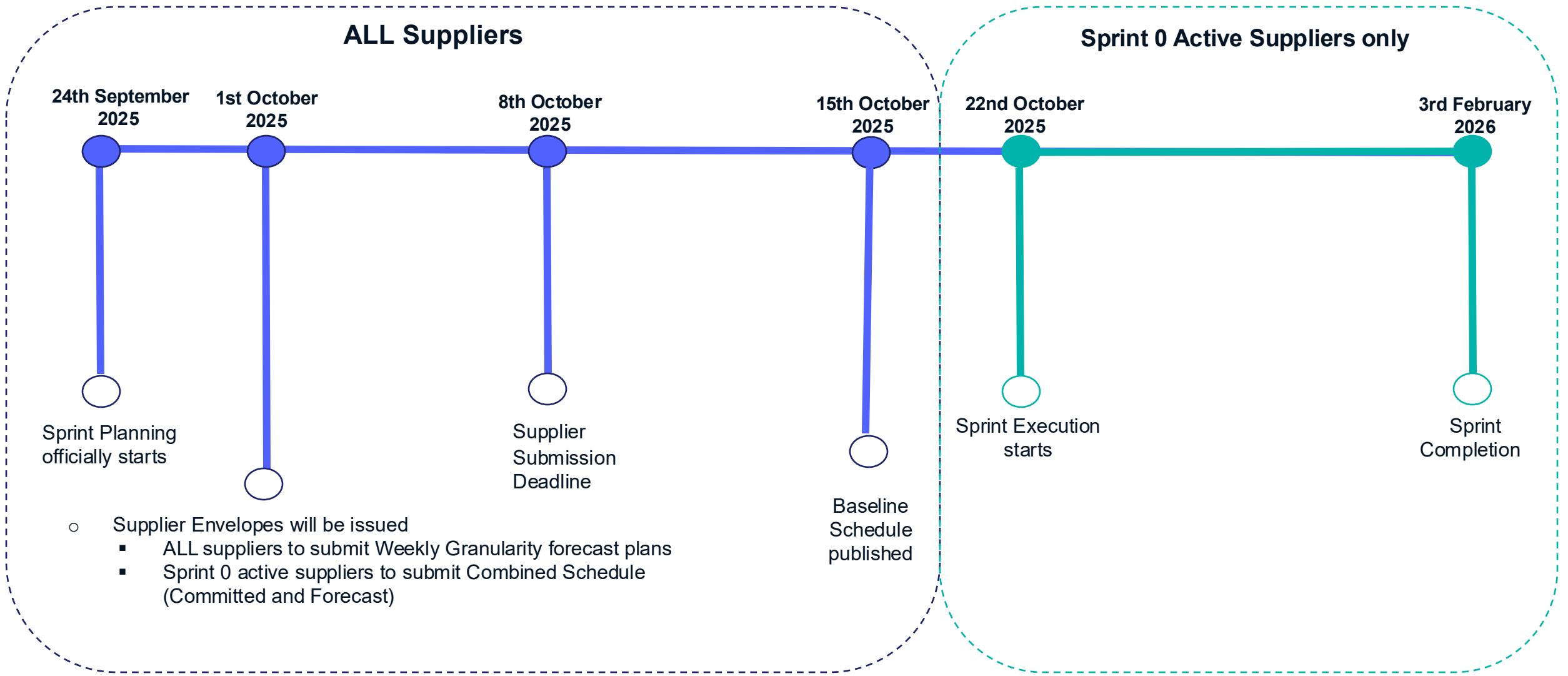


Common Issues and Trends

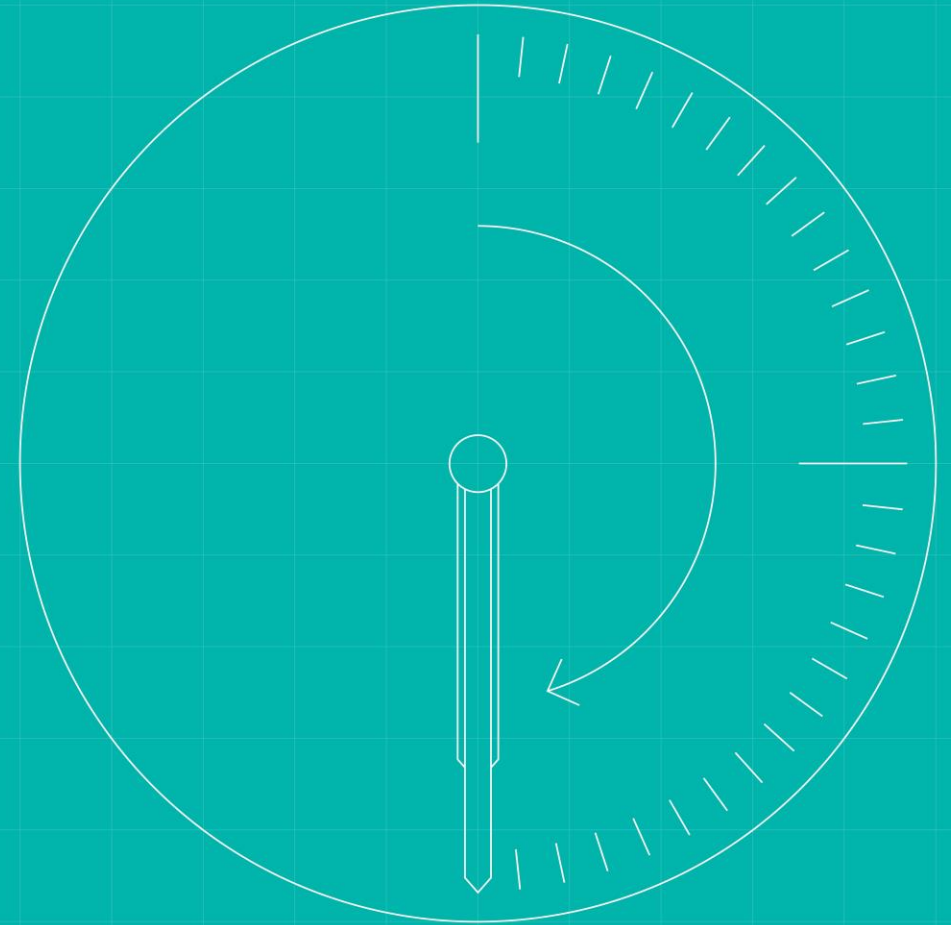


Look Ahead

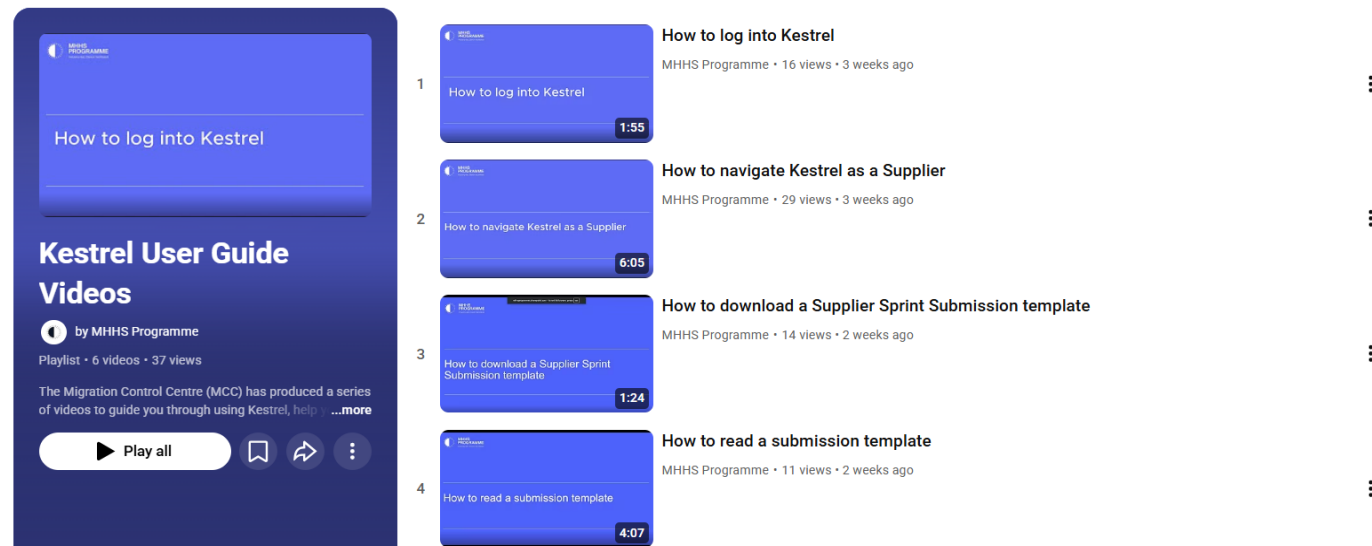
Data included in these slides is as of 02 January 2026.



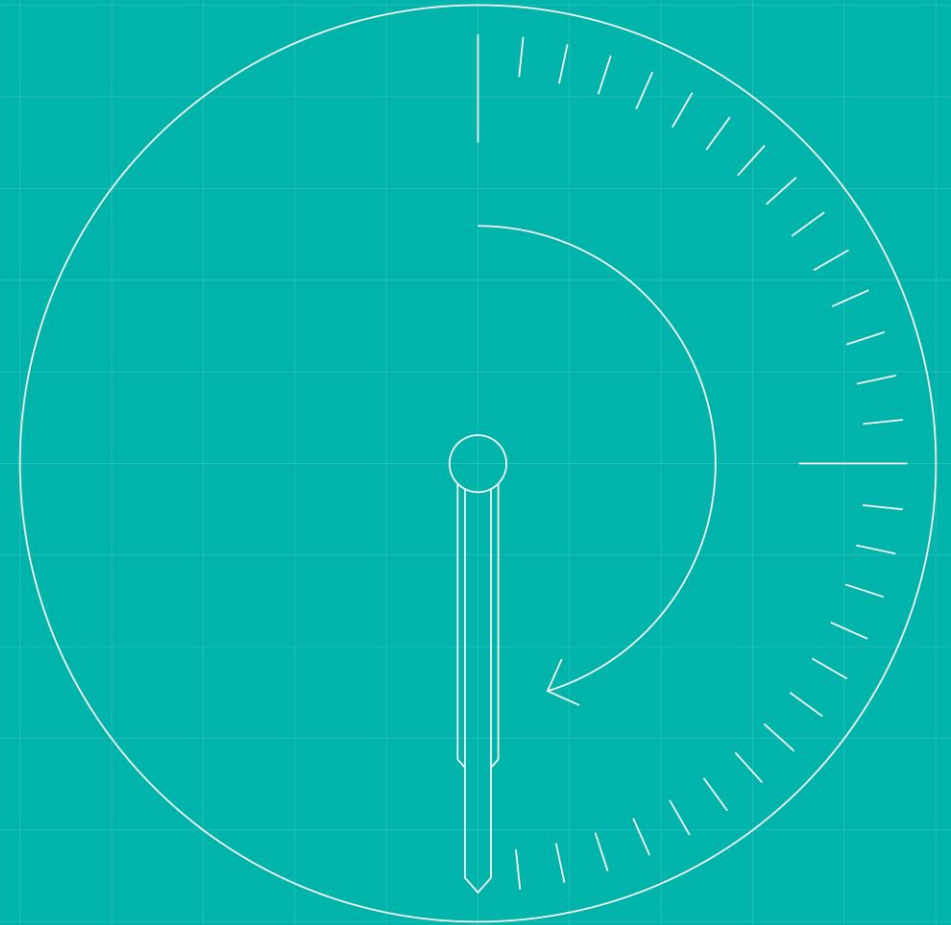
Sprint 0 Planning



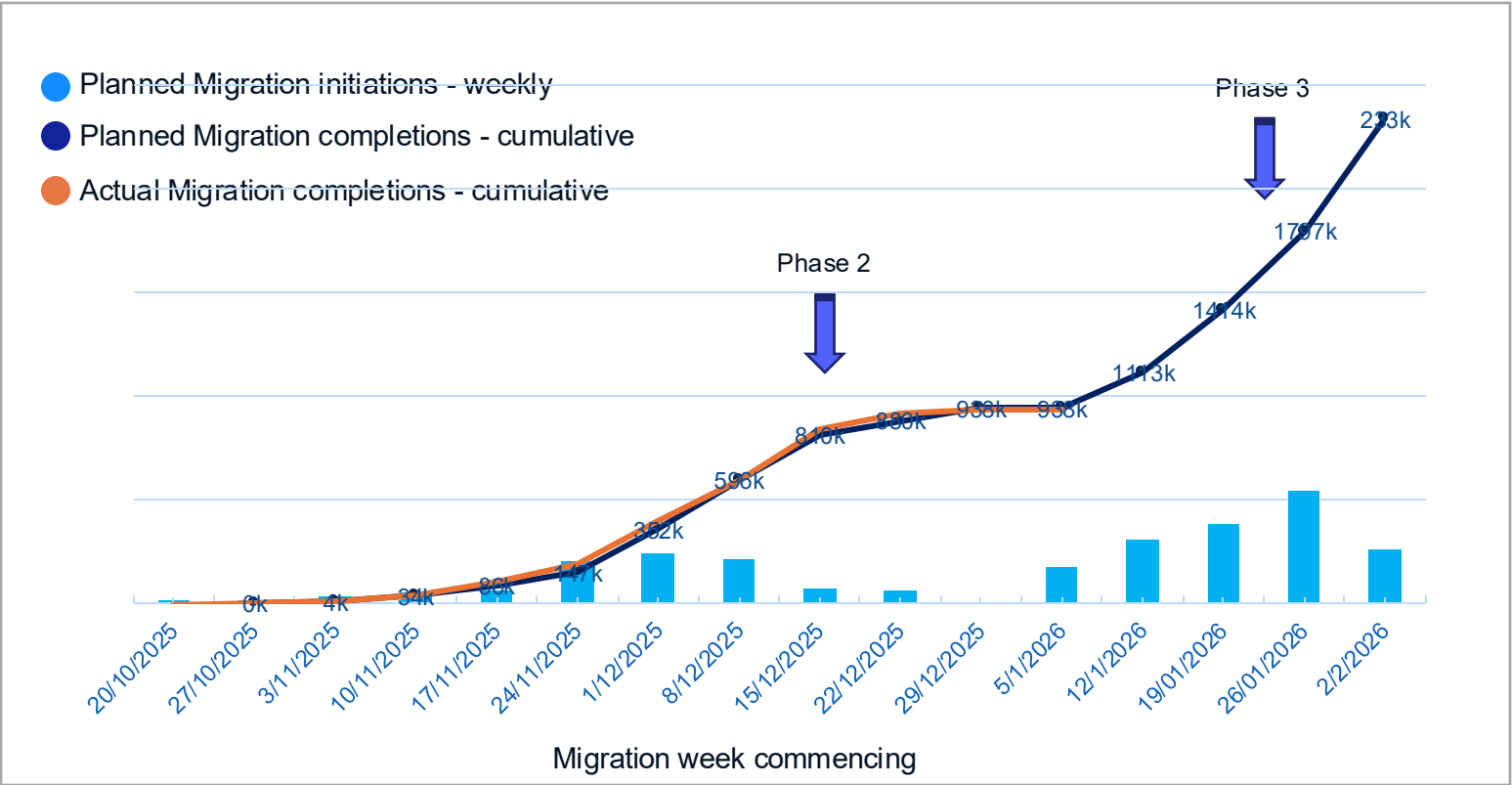
- MCC aimed to receive 100% of qualifying supplier MPANs submitted via Kestrel. Achieved 99.08% of all industry MPANs, and 100% all qualifying MPANs
- All industry participants have access to a committed and forecast baselined schedule
- From the MCC perspective Sprint 0 planning was a major success.
- Main issues were around Kestrel access and unfamiliarity with submitting a plan. We expect these to be reduced for SP1.
- To assist with future Sprint planning cycles, the MCC has published a set of video guides on the Collaboration Base



Sprint 0 - Progress So Far



Migration status: Sprint 0



Commentary:

- 1. Migration initiations remain on track with 100.1% compliance to plan
- 2. Migration completions remain on track with 99.9% completing as expected
- 3. Total exceptions remain low. Exception trends and the preventative actions to mitigate future occurrences are discussed at the Migration Working Group.

Migration initiation summary

Cumulative Migration initiations to 02 Jan 2026

Migration initiations planned	Migration initiations (IF31)	Migration initiations successful (IF35)	% IF31 v IF35
938,089	938,705	937,339	99.9%

Migration completion summary

Cumulative Migration completions to 02 Jan 2026

Migration completions planned	Migration completions expected (IF35)*	Migrations completed (IF36)**	% IF35 v IF36
938,089	937,339	937,274	99.9%

* A lag of 5 working days is required between migration initiation (IF31) and migration completion (IF36)

** Some variances may occur due to related MPANs and Changes of Supplier events taking place between migration initiation and completion

- 2 out of 5 Suppliers who were expected to start migrating in Sprint 0 have started migrating. Remaining 3 Suppliers are due to start this month.
- Around two thirds of the way through Sprint 0. Approximately one third of the expected volume has been migrated. Substantial increase in volume to be migrated in the rest of Sprint 0.
- Currently migrated 2.7% of the MPANs needed to achieve M15. This is expected to be 7.7% by the end of Sprint 0.
- 2 Migration Days where no migrations occurred when migrations were planned

Migrations Planned in Sprint 0	Migrations Completed so far	% Completed	Volume of Migrations still to be initiated	% still to be completed
2,591,958	937,274	36.16%	1,654,684	63.84%

	Number
Migration Days in Sprint 0	68
Migration Days that have passed	46/68
Migration Days left in Sprint 0	22/28
Migrations Days, in Sprint 0, where migrations are scheduled	64/68
Migrations Days prior to 2 January migrations were scheduled	44/46
Migration Days were prior to 2 January migrations occurred	42/46

Overall Plan V Actuals accuracy, at overall Sprint level, is high with **100.06%** accuracy

Migrations Planned	Migrations Initiated	Accuracy of Plan
938,089	938,705	100.06%

Weekly Plan V Actuals accuracy is also high, with an average **99.76%** accuracy. Where there were shortfalls in initiations, Suppliers were able to catch up by doing additional volume within the week. This was discussed with MCC in advance. The viability of catching up within week may reduce as there are more Suppliers migrating and higher migration volumes. Suppliers should prioritise in-day catch up where possible going forward.

Migra tion Week	Migrations Planned	Migrations Initiated	Accuracy of Plan
1	800	769	96.13%
2	3741	3747	100.16%
3	30156	29990	99.45%
4	51469	53438	103.83%
5	60846	60943	100.16%
6	205631	205671	100.02%
7	243467	233984	96.11%
8	214067	218814	102.22%
9	70000	73498	105.00%
10	57912	57872	99.93%

The biggest variance against planned v actuals was seen at a daily level. Average daily Plan V Actuals accuracy rate is 108%.

However, this is driven by 13th November and 14th November where a Supplier was catching up on a two day pause from migrations. As such there was an exceptionally large deviation from plan.

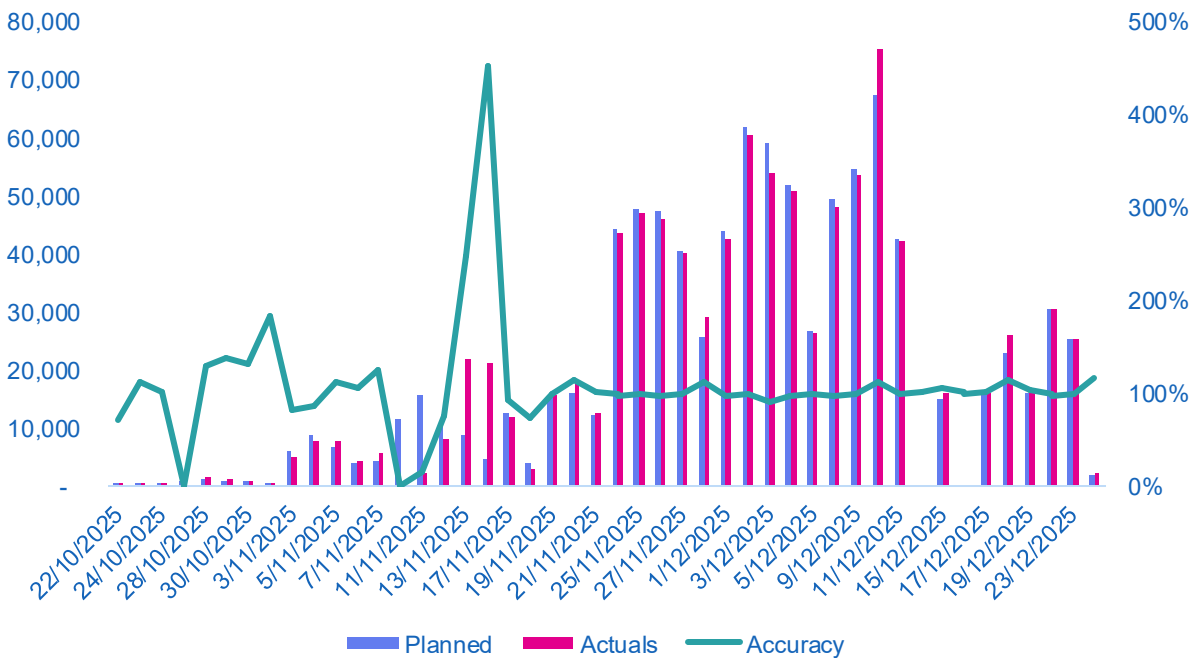
If these dates are removed the average daily Plan V Actuals accuracy rate is 96%

Less variance in Phase 1 compared to Phase 2. Average daily accuracy for December is 99.6%. This is also influenced by the fact that there were no days in December where a Supplier paused their migrations.

The Suppliers over plan variances were discussed with MCC in advance.

Suppliers being under plan is mainly due to MPANs that have failed internal checks due to CoS or meter works. There have been a small number of days where a Suppliers has made the decision not to migrate or has had an internal issue that has led to migrations not being initiated as expected.

	Number of Days
Days under Plan	22
Days over Plan	21
Days Matching Plan	3
Average Plan V Actuals Accuracy	108%



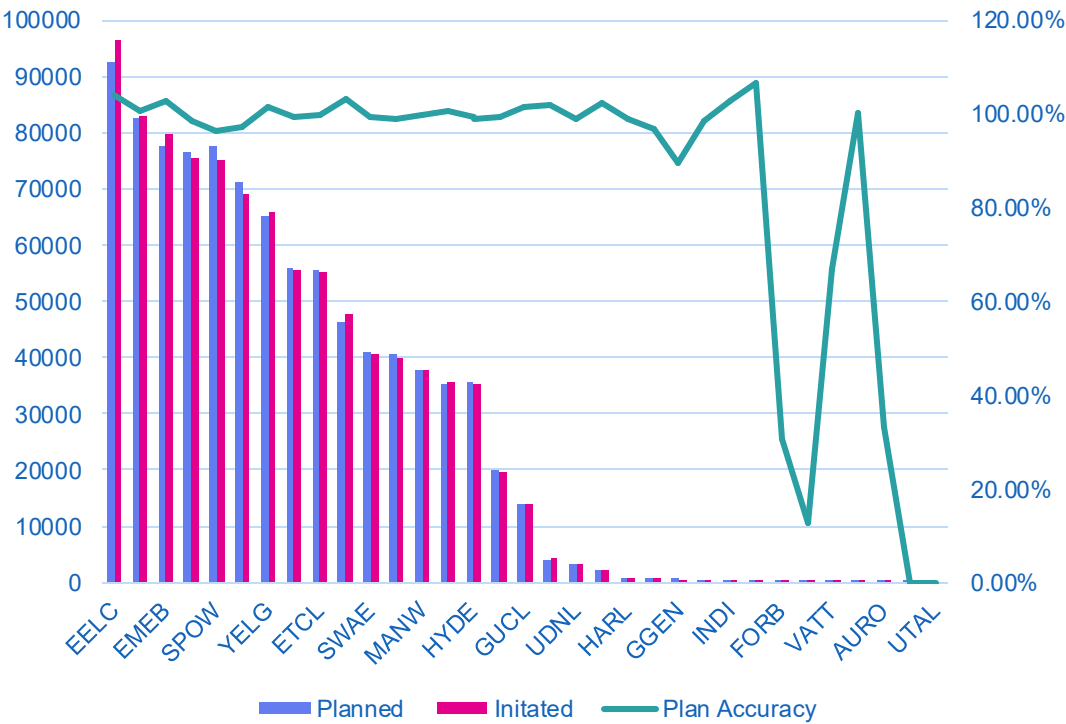
Average sprint plan accuracy across the LDSOs is 86.05%.

Accuracy rate is more variable with smaller LDSOs due to smaller number of migrations planned.

Average sprint plan accuracy across the DNOs is 99.98%

As with the overall sprint volumes, accuracy does decrease at a weekly and daily level.

No LDSO breaches of thresholds.



The below table offers a view on the DIP messages and Business Processes exercised so far. Areas that have not been exercised yet are the optional DIP messages.

Change of Supply Forward Migration (DEL962) - IF-001	Consumption Amendment - IF-027/028
Change of Supply (COS) - IF-001/002	Change of Service - Metering Service (Forward Migration) (DEL963) - IF-031-036
Change of Supply (Initial Registration) - IF-001/002	Change of Service - Data Service (Forward Migration) (DEL964) - IF-031-036
New Connection - Reverse Migration (DEL965) - IF-003	Change of Data Service - IF-031-037
Change of Supply - Reverse Migration (DEL965) - IF-003	Change of Metering Service - IF-031-037
Change of Service - Data Service (Reverse Migration) (DEL967) - IF-003	Change of Metering Service (COS) - IF-031-037
Change of Service - Metering Service (Reverse Migration) (DEL966) - IF-003	Change of Data Service (COS) - IF-031-037
Change of Meter - IF-005/006	CSS & DCC Update - IF-035
Change of Energisation Status - IF-007/008	Change of Registration Data - Apply or Expire customer direct contract (CDC Marker) - IF-038/039
Disconnection - IF-009	Annual Consumption - IF-040
Defaulted UTC Settlement Period Consumption Data - IF-013	Customer Own Reads - IF-041
Data Processing - IF-014	Transfer of Reads - Change of Smart Data Service - IF-041
Change of Registration Data - Change of Address - IF-018	Energisation Read - IF-041
Change of Registration Data - Change of DUoS Tariff ID - IF-018	Change of Connection Type - IF-043
Change of Registration Data - DCC enrolment - IF-018	Change of Market Segment - IF-044
Change of Registration Data - One Time Change of Energy Direction - IF-018	Registration Service Monitoring & Notification - IF-045
Change of Registration Data - Change of Domestic Indicator- IF-018	Industry Standing Data - IF-047
Change of Registration Data - Change of Metered Indicator - IF-018	New Connection in EES IF-050
Change of Registration Data - Create Linked Import/Export - IF-019/020	Change of Registration Data - EES Updates - IF-050
Data Processing - IF-021	Market-wide Data Service (II Run) - REP-002/002A/002B/006/008/009
Load Shaping Service (ECS) - IF-022/23	Market-wide Data Service (SF Run) - REP-002/002A/002B/006/008/009
Data Collection - IF-024	Volume Allocation Service (II Run) - REP-003/003A/004/007
Change of Registration Data - Change of Consent Granularity - IF-025/26	Volume Allocation Service (SF Run) - REP-003/003A/004/007
Change of Registration Data - IHD maintenance - IF-025/026	LDSO E-Bill - REP-900 (Distribution Invoice)
Change of Registration Data - Legacy Data update - IF-025/026	Aggregated DUoS Charges (Aggregated DUoS Charges) - REP-901

Migrated

Meter Type	Meter Model	Comms
H	CMU CALMU	PSTN
K	VIS ABB VISION	IP
N	EDMI	GSM
NSS	EDMI Mk10	GPRS
RCAMR	Honeywell	GSM
RCAMY	EDMI MK10 CT 3ph	IP
S1	EDMI MK10D W/C Remote Disconnect	GPRS
S2A	HONEYWELL PB3CABYCT-ZK	BT
S2AD	Elster LM3AABNBH-A	BT
S2ADE	EDMI MK10 CT 3ph	GPRS
S2B	EDMI MK10A LVCT	GPRS
S2BD	EDMI MK10D (RDAMR1.1) EDM MK10D (RD)	IP
S2BDE	L&G E650 LV CTO (ZMD410 LV)	IP
S2C	EDMI MK10 CT 3ph	GPRS
S2CD	EDMI MK10-1 2000-1010	GSM
S2CDE	L&G E650 LV CTO (ZMD410 LV)	IP
	Elster LM3MABNBH-A	GSM
	EDMI MK10-1 2000-1010	GPRS
	EDMI MK7 LVWC D	CSD/GSM
	EDMI MK7 LVWC D	CSD/GSM

Not yet Migrated

Meter Type
2ADEF
2ADF
2AEF
2AF
2BDEF
2BDF
2BEF
2BF
2CDEF
2CDF
2CEF
2CF
LAG_
LEAD_
MAIN_
NCAMR
S
SPECL
T

All market segments have been migrated at least once – Advanced, Smart and Unmetered.

Sprint 0 Planning Submission response and MPAN coverage –
Overall we achieved 99.08% of industry MPANs and 100% all
qualifying MPANs

Migration M11 Day 1 – huge success with migrations going ahead
for the active suppliers

No LDSO or Central Services Threshold Breach

Migration Comms Strategy, including Teams channels, has been
highly effective in providing quick and important updates

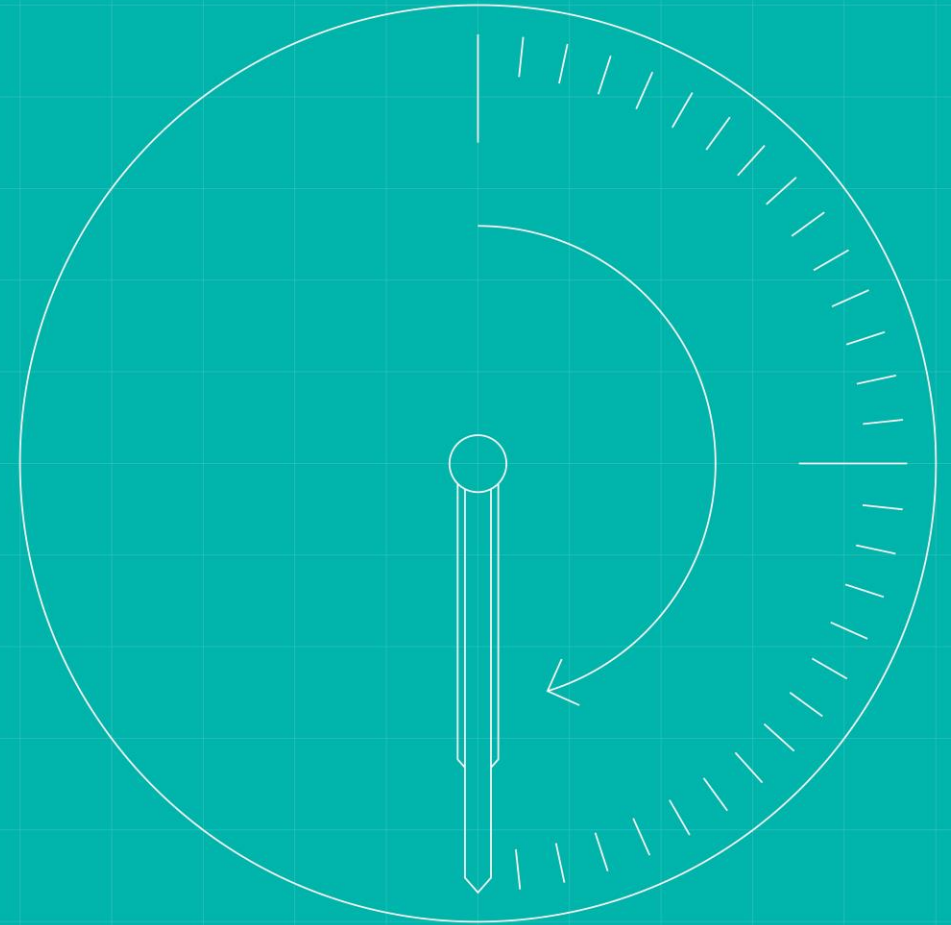
MCC has proven to be effective and flexible to daily Supplier
challenges – working with suppliers to catch up with any shortfalls

There has been excellent industry wide collaboration across all
constituencies

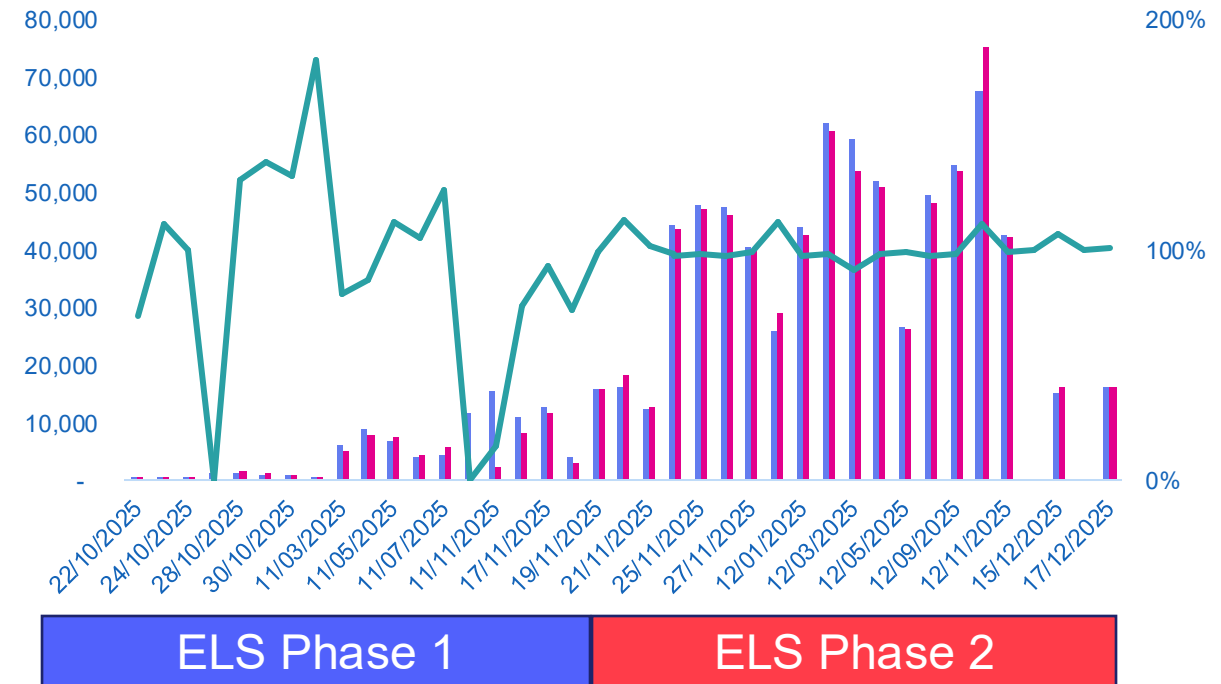
Questions?



Sprint 0 – Trends and Common Issues

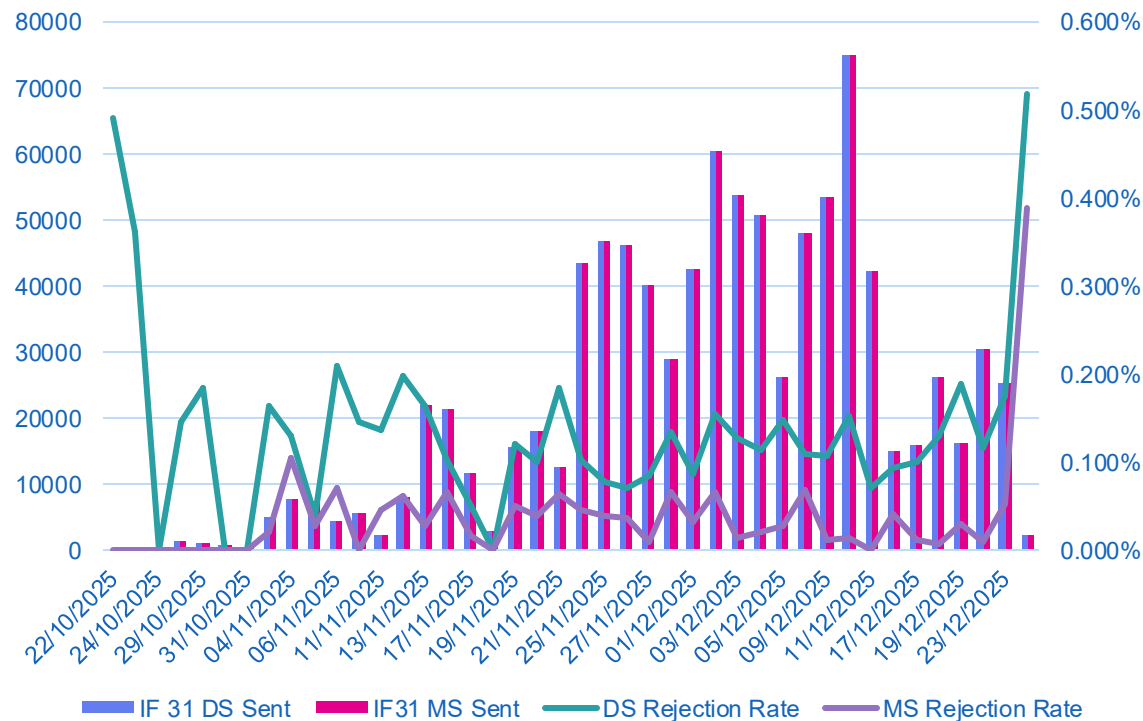


- **ELS Phase 1** ran from **22/10/2025** to **20/11/2025**
- **ELS Phase 2** ran from **21/11/2025** to **18/12/2025**
- There was a 'peak of peak' test for phase 1 on **18th November**, where 53,000 Migrations completed
- The phase 2 'peak of peak' saw 210,000 migrations complete on **16th December**
- Both phases were approved to complete by MCAG with no objections
- Error rates across both phases were consistent. Notably the increased volumes of Phase 2 did not cause any major issues with central services or LDSOs

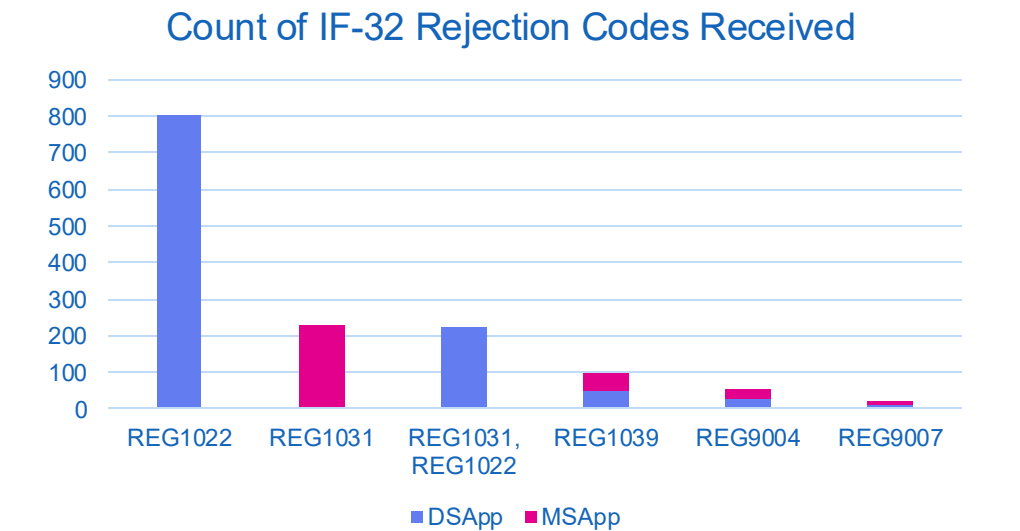


Phase 2 saw suppliers sticking closer to their plans, while also increasing daily migration volumes

IF-32 Rejection Rate



- There is 1% expected error rate built into the Migration Framework. Error rate seen so far in migration is under this value.
- Overall error rate on the DS is 0.119% and 0.033% on the MS.
- Error rate on the DS is consistently higher than on MS
- Highest error rate was seen on Day 1 of Migration.
- Error rate has not increased as migration volumes have increased.

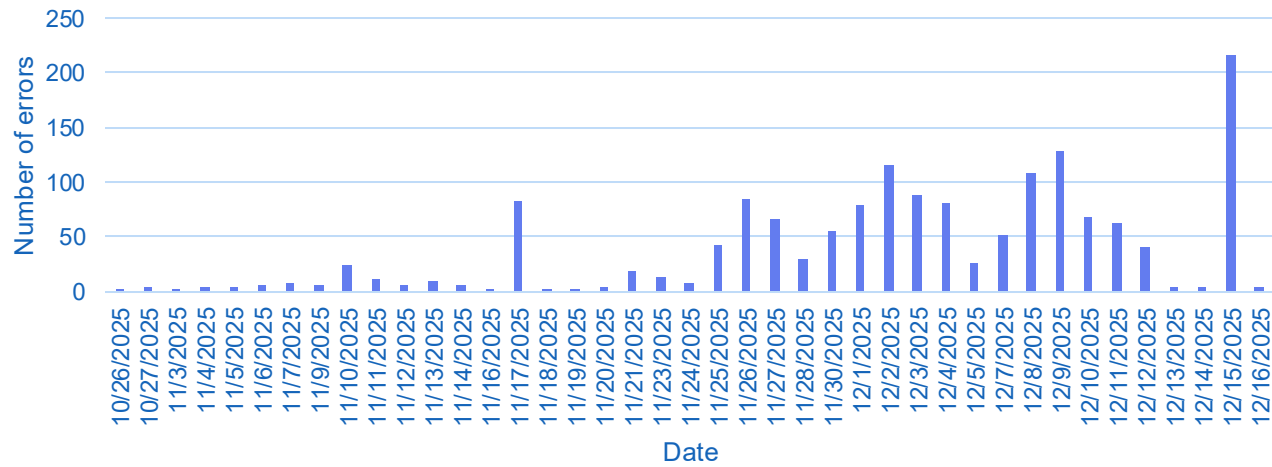


Code List	Description	DSApp	MSApp
REG1022	Consent Granularity, Domestic Premises Indicator, Energy Direction and Market Segment combination is invalid	806	
REG1031	Agent is not compatible with current Market Segment for MPAN	4	227
REG1031, REG1022	Agent is not compatible with current Market Segment for MPAN Consent Granularity, Domestic Premises Indicator, Energy Direction and Market Segment combination is invalid	223	
REG1039	Appointments barred on Related Secondary MPAN	48	48
REG9004	Third Party Switch in Progress	28	28
REG9007	MCS/MCA Scenarios cannot be used for an Already Migrated MPAN	8	12

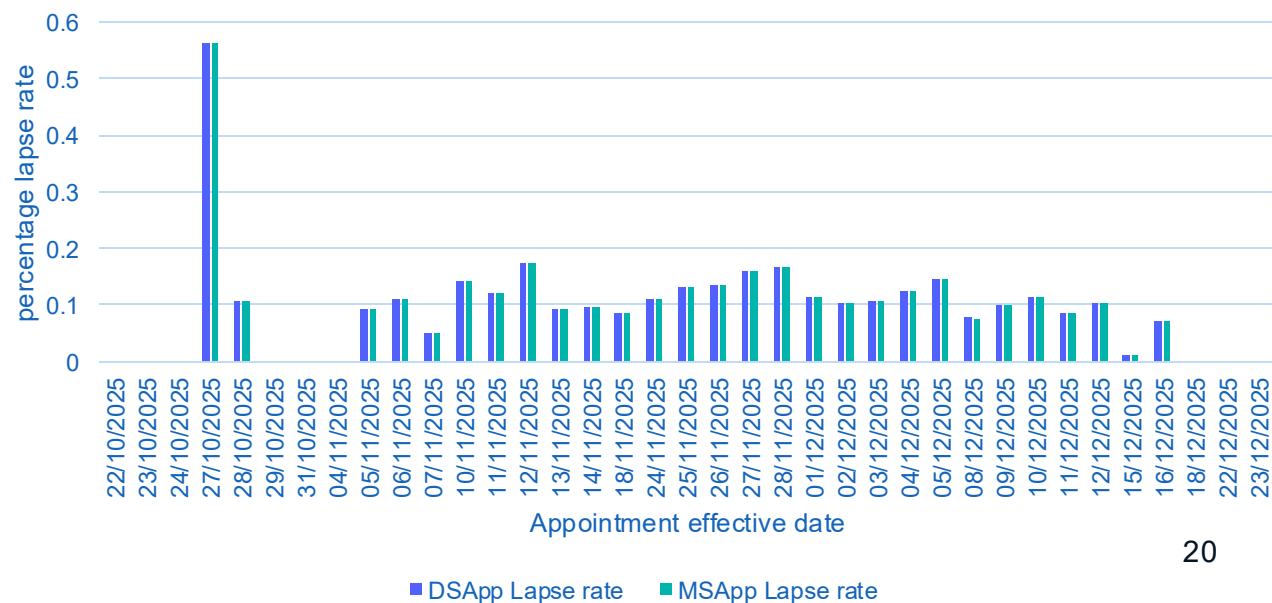
- Most common rejection reasons are due to Consent Granularity & Agent being appointed not matching market segment MPAN.
- Some Consent Granularity rejections could be because there is traditional meter that hasn't been fully removed. If there is a smart and traditional meter type on the same MPAN, Registration Services will send the meter type as traditional, and the Consent Granularity sent in the IF-31 will be validated against traditional Consent Granularity combinations as set out in ISDEntityM17 - Valid Consent Granularity Combinations.
- Some Consent Granularity & Market Segment errors are due to the Import MPAN defaulting to the Advanced segment even if it is correctly set to Smart, where it is part of linked or related MPAN set and Export MPAN is missing meter data. This is because at the point of market segment population in September 2025, market segment was set to Advanced if the MPAN was meterless.

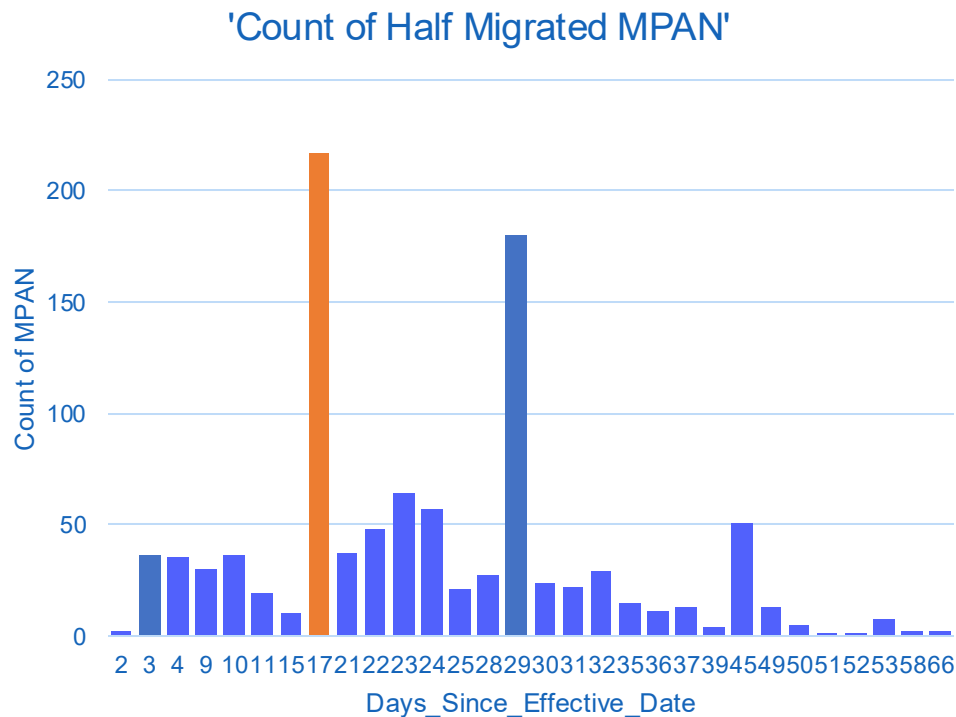
- IF-035 lapses have been consistently low, with less than 150 lapsed appointments each day.
- Other error reasons for these messages are very rare, with lapses making up >99% of total IF-035 rejections
- Lapse rate on IF-035 also consistently low, below 0.5% of both DS and MS appointments being lapsed
- This rate did not increase with the higher daily volumes completed in phase 2 of ELS

IF-035 Lapses by date



IF-035 Appointment Lapse Rate





- Of the 938,285 migrations that have received PUB-036, 1019 appear to be half migrated so has 1 agent successfully appointed but not the other. This is an 0.01% error rate.
- Orange bar corresponds to the second peak of peak tests. Of the 210,282 migrations that received PUB-036, 217 appear to be half migrated. This is an 0.1% error rate.
- 'Half' migrated MPANs are more likely to have a MS appointed but not a DS appointed which corresponds with the IF-32 rejection rate being slightly higher on the DS.
- This is being monitored and raised with Suppliers

Day 1

- Sharing MPANs to be migrated on that day in advance – enabled close monitoring and tracking of progress within the DIP portal
- Day 1 migrations to complete within working hours, same day migrations i.e., effective date is the same as initiated date – allowed the Migration team to provide hands-on support and guidance to active participants
- Connectivity – avoiding connectivity issues by ensuring webhooks and connectivity is ready for Day 1, verifying connectivity in advance e.g., webhooks configuration.

Key Call Out

- Initial Annual Consumption being received sooner than expected – received within 30 days rather than at 30 days. It is important to understand this and the implication this will have on downstream processes.
- Utilising PUB 45's to notify of 'half migrated' MPANs – message received from Registration Services notifying suppliers that a MPAN has a missing DS/MS appointment. This should be used as an opportunity to correct 'half migrated' MPANs as quickly as possible
- User Reporting – Supplier reporting particularly i.e., how does this look like? Which DIP messages are being tracked? Then how to utilise this reporting for exception management

- Missing/Incorrect CSS Registration ID
- Consent Granularity for Traditional Meters
- Consent Granularity – more than 1 meter type for MPAN

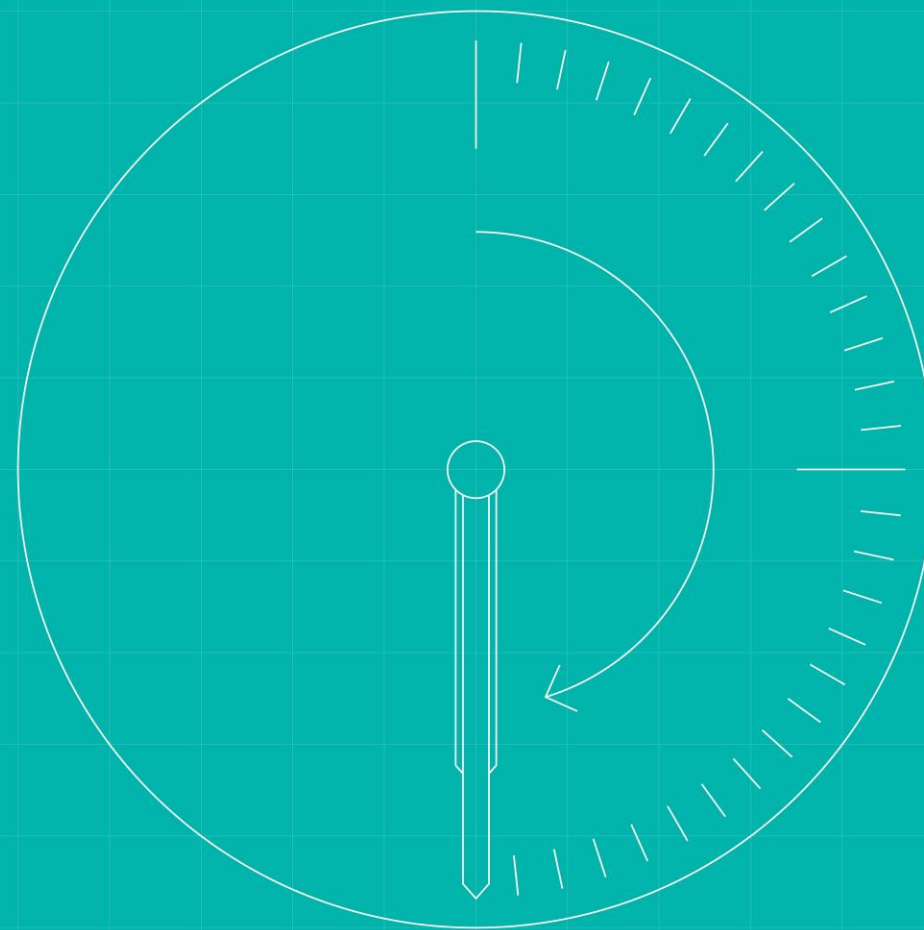
Key Call Out:

- Use of 'CSP' event code, if effective from date has passed

Questions?



Sprint 0 – Look Ahead



- With the new suppliers starting this month, we will be reviewing our reporting to understand if the trends seen in Migration so far continue for these suppliers
- There will also be a Sprint 0 Retro where we review the whole of the sprint and update findings from this meeting
- Following the ELS Phase 2 Peak of Peak test, we have been trialling reducing the Migration Activation Offset (MAO) from 5 working days to 3 working days. This should reduce the chance of a Change of Supply occurring between Migration initiation and the appointment effective from date.
- The trial will run until the end of ELS phase 3.
- We will review the findings after the end of ELS and bring this to a future MWG to decide the next steps. Any change to the MAO will be subject to industry consultation.
- We will need to wait until a period of non-Migration days to implement any future change, likely a contract round period.

Q&A